

ADDENDUM NUMBER #1

<u>PROJECT</u>	<u>BIDS DUE</u>
Charter Township of Union Sanitary Sewer Pump Station No. 5 Upgrades GFA Project No: 23069	Date: March 27, 2025 Time: 10:00 AM Location: Charter Township of Union 5228 South Isabella Rd Mt Pleasant, MI 48858

The Addendum is issued prior to the receipt of bid proposals to amend the Contract Documents as follows. Bidders shall acknowledge receipt of this addendum by means of acknowledging on Page 1 of the Bid Form (EJCDC C-410).

CLARIFICATIONS

1. Prevailing Wage, American Iron & Steel, or BABA are not requirements of this project.
2. A geotechnical report is not available for this site. Attached to this addendum is the 1979 record drawing which does illustrate a soil boring from that period. This is provided for reference only and Contractor shall be responsible to verify and perform dewatering if necessary.

SPECIFICATIONS

1. Selective tree removal / clearing is permissible to facilitate removal and installation of infrastructure as coordinated with Union Township staff. Specification Section 2230 is included in this addendum and shall be incorporated into the bidding package. Costs for this work shall be included in the cost of the project as associated the station upgrades and vault installation as noted in Section 01270, clearing and grubbing.
2. Kerr Pump and Supply, Control Panel and Pump Scope of Work dated 2/17/2025, shall be stricken and replaced with the attached dated 3/24/2025.

DRAWINGS

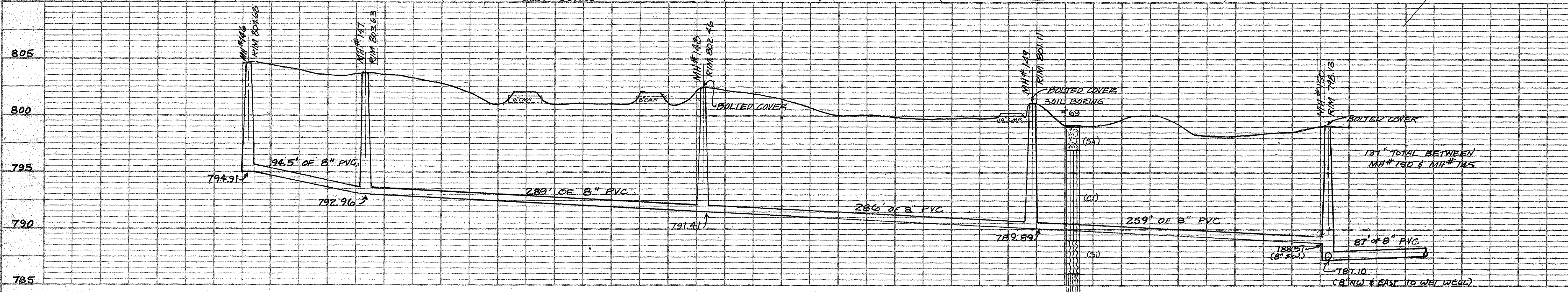
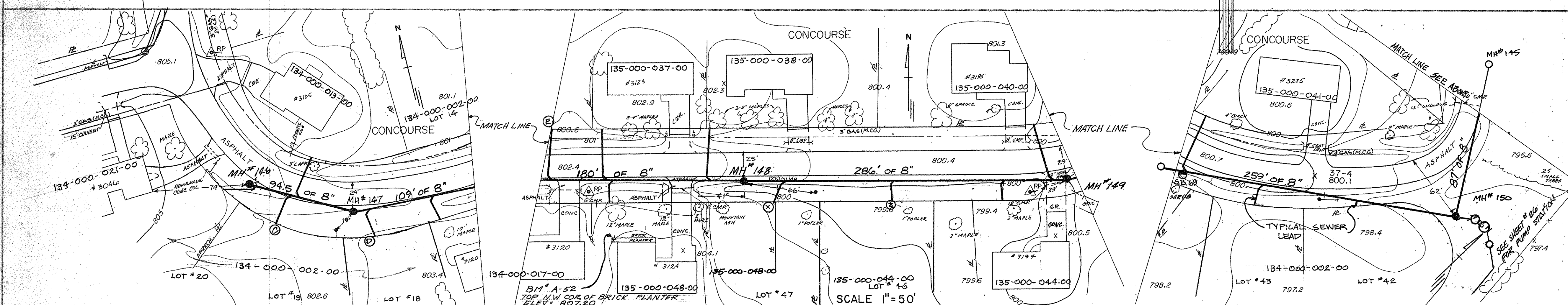
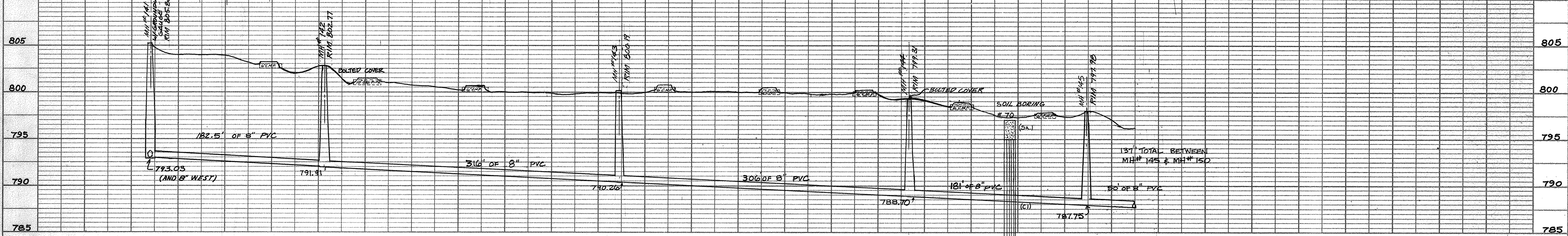
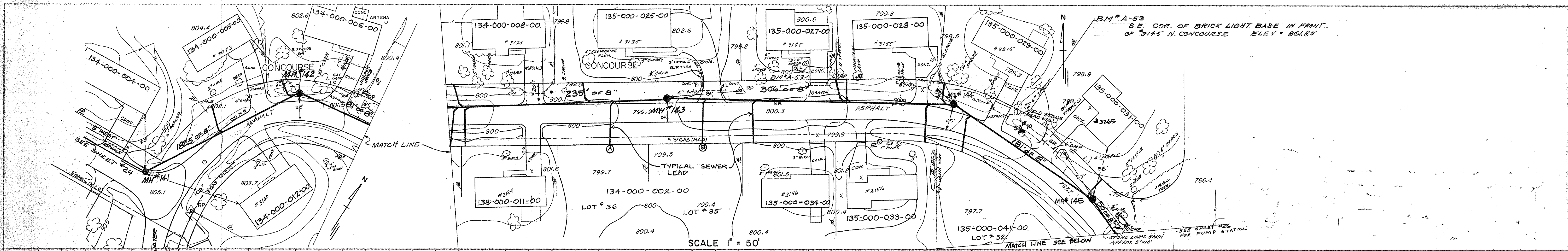
1. Valve / Flow Meter Vault can be provided with steps in lieu of ladder. Steps shall meet compliance with technical specification Section 7.02.3.
2. Temporary power supply including generator for bypass pumping as provided by Contractor shall be sound attenuated as surrounding neighborhood is residential.
3. Sheet M1.2: There is not an existing hoist mounting plate. The contractor shall be responsible for installing and provide new with costs including in the costs of the project.
4. Hoisting mounting plate is to be new, there is no existing to be relocated as noted on sheet M1.2.
5. Sheet M1.2: The camlock to be provided on the suction line shall be female with plug.

Aluminum material is acceptable.

6. Sheet E1.2: Onsite fiber optic is available as noted on the plans. Attached are photos to illustrate existing conditions. CMS is both the Township's Fiber and IT service provider. CMS will supply the switch and battery backup for their equipment. The contractor is responsible for mounting the Fiber box on the back of the new control panel. Additionally, contractor to provide 110V power and a Cat 6 cable connecting the Fiber switch to the new Epic controller. No Fiber connection will be required inside the new control panel, as CMS will handle this within their new panel.



This Addendum No. 1 becomes part of the Contract Documents as of this date and supersedes the information in the originally issued Contract Documents where applicable. The Contractor shall acknowledge receipt of the Addendum in the Bid Schedule included with his/her bid.



SEWER LEAD #	LOCATION FROM MANHOLE DISTANCE FROM M.H. #	DISTANCE FROM SEWER TO END OF LEAD	DEPTH AT #
134-000-005-00	14' S.W. OF MH#142	25' TO R+4' BEYOND	9'
134-000-005-00	100' S.W. OF MH#142	22' TO R+4' BEYOND	9'
134-000-002-00	59' WEST OF MH#143	47' TO R+3' BEYOND	8'
135-000-031-00	86' WEST OF MH#143	25' TO R+3' BEYOND	8'
134-000-011-00	216' WEST OF MH#143	40' TO R+3' BEYOND	8'
134-000-028-00	220' WEST OF MH#143	29' TO R+3' BEYOND	8'
134-000-022-00	227' WEST OF MH#143	40' TO R+3' BEYOND	8'
135-000-033-00	15' WEST OF MH#144	22' TO R+3' BEYOND	8 1/2'
135-000-029-00	29' WEST OF MH#144	43' TO R+3' BEYOND	10 1/2'
135-000-027-00	116' WEST OF MH#144	26' TO R+5' BEYOND	10'
135-000-024-00	120' WEST OF MH#144	26' TO R+3' BEYOND	8'
135-000-023-00	215' WEST OF MH#144	44' TO R+3' BEYOND	8'
134-000-022-00	268' WEST OF MH#144	46' TO R+3' BEYOND	8'
135-000-021-00	159' WEST OF MH#145	40' TO R+3' BEYOND	10 1/2'

SEWER LEAD #	LOCATION FROM MANHOLE DISTANCE FROM M.H. #	DISTANCE FROM SEWER TO END OF LEAD	DEPTH AT #
135-000-031-00	6' N.W. OF MH#145	24' TO R+3' BEYOND	8'
134-000-023-00	60' WEST OF MH#147	44' TO R+1' BEYOND	5'
134-000-022-00	62' WEST OF MH#147	29' TO R+1' BEYOND	6 1/2'
134-000-021-00	91' WEST OF MH#147	23' TO R	4'
135-000-028-00	33' WEST OF MH#148	49' TO R	5'
135-000-028-00	119' WEST OF MH#148	21' TO R	5'
135-000-037-00	123' WEST OF MH#148	49' TO R	5'
134-000-027-00	171' WEST OF MH#148	49' TO R	5'
134-000-027-00	222' WEST OF MH#148	25' TO R	5'
134-000-022-00	280' WEST OF MH#148	30' TO R+1' BEYOND	6.5'
134-000-020-00	15' WEST OF MH#149	49' TO R	5'
135-000-024-00	59' WEST OF MH#149	26' TO R	5'
134-000-024-00	155' WEST OF MH#149	26' TO R	5'
134-000-024-00	264' WEST OF MH#149	26' TO R	5'
134-000-022-00	90' WEST OF MH#150	20' TO R	5'
134-000-022-00	176' WEST OF MH#150	30' TO R	5'
135-000-021-00	244' WEST OF MH#150	49' TO R	5'

PLATE 2 - PLAN - PROFILE - F. A. S.
CLEARPRINT PAPER CO. S. F. CAL. NO. 1009H

AS-BUILT DONE 10-29-79 BSS
DIVISION B
REV 7-17-77 GMM
REV 1-21-81

SECTION 02230 - SITE CLEARING & DEMOLITION

PART 1 - GENERAL

1.1 RELATED SECTIONS

- A. SECTION 4 – EXCAVATION, TRENCHING AND BACKFILLING (Charter Township of Union Specification)

1.2 SUMMARY

- A. This Section includes the following:
 1. Protecting existing trees, shrubs, groundcovers, plants, and grass not indicated for removal.
 2. Removing existing trees, shrubs, groundcovers, plants, and grass.
 3. Clearing and grubbing.
 4. Stripping and stockpiling topsoil.
 5. Removing above- and below-grade site improvements.
 6. Disconnecting and capping or sealing site utilities.
 7. Temporary erosion and sedimentation control measures.

1.3 MATERIAL OWNERSHIP

- A. Except for stripped topsoil or other materials indicated to remain Owner's property, cleared materials shall become Contractor's property and shall be removed from Project site.

1.4 PROJECT CONDITIONS

- A. Traffic: Minimize interference with adjoining roads, streets, walks, and other adjacent occupied or used facilities during site-clearing and demolition operations.
 1. Do not close or obstruct streets, walks, or other adjacent occupied or used facilities without permission from Owner and authorities having jurisdiction.
 2. Provide alternate routes around closed or obstructed traffic ways if required by authorities having jurisdiction.
- B. Salvable Improvements: Carefully remove items indicated to be salvaged and store where indicated. Coordinate with Owner.
- C. Utility Locator Service: Notify utility locator service for area where Project is located before site clearing.
- D. Do not commence site clearing operations until temporary erosion and sedimentation control measures are in place.

PART 2 - PRODUCTS

2.1 SOIL MATERIALS

- A. Satisfactory Soil Materials: Requirements for satisfactory soil materials are specified in Division 2 Section "Earthwork."
 - 1. Obtain approved borrow soil materials off-site when satisfactory soil materials are not available on-site.

PART 3 - EXECUTION

3.1 PREPARATION

- A. Protect and maintain benchmarks and survey control points from disturbance during construction. Property corners or other monuments disturbed shall be replaced at the Contractor's expense by a registered Land Surveyor.
- B. Locate and clearly flag trees and vegetation to remain or to be relocated.
- C. Protect existing site improvements to remain from damage during construction.
 - 1. Restore damaged improvements to their original condition, as acceptable to Owner and/or Engineer.

3.2 TEMPORARY EROSION AND SEDIMENTATION CONTROL

- A. Provide temporary erosion and sedimentation control measures as indicated on the drawings.
- B. Inspect, repair, and maintain erosion and sedimentation control measures during construction until permanent vegetation has been established.
- C. Remove erosion and sedimentation controls and restore and stabilize areas disturbed during removal.

3.3 DEMOLITION

- A. Completely demolish above grade structures and appurtenances to the extent indicated on the drawings. Remove all materials from the site.
- B. Completely remove all existing below grade structures which are in the same location as proposed structures to a depth of 3'-0" below bottom of the new structures, unless noted otherwise on the drawings. All below grade structures that are not in the same location as proposed structures and that are exposed or will become exposed after final grading shall be removed to a depth of 1'-0" below finish grade.

3.4 TREE PROTECTION

- A. Tree protection zone is the area surrounding individual trees or groups of tree to remain during construction and is defined by the drip line of individual trees or the perimeter drip line of groups of trees, unless indicated otherwise on the drawings.
- B. Erect and maintain temporary fencing around tree protection zones before starting site clearing. Remove fence when construction is complete.
- C. Do not excavate within tree protection zones.
- D. Replace trees and vegetation indicated to remain that are damaged by construction operations, in a manner approved by Engineer.

3.5 UTILITIES

- A. Locate, identify, disconnect, and seal or cap off utilities indicated to be removed.
 - 1. Arrange with utility companies to shut off indicated utilities.
 - 2. Plug abandoned piping with non-shrink grout.
- B. Existing Utilities: Do not interrupt utilities serving facilities occupied by Owner or others unless permitted under the following conditions and then only after arranging to provide temporary utility services.
 - 1. Notify Engineer not less than two days in advance of proposed utility interruptions.
 - 2. Do not proceed with utility interruptions without Engineer's written permission.

3.6 CLEARING AND GRUBBING

- A. Remove all trees, stumps, brush and other vegetation to the limits indicated on the plans.
- B. Fill depressions caused by clearing and grubbing operations with satisfactory soil material unless further excavation or earthwork is indicated.
 - 1. Place fill material in horizontal layers not exceeding a loose depth of 9 inches, and compact each layer to a density equal to adjacent original ground.

3.7 TOPSOIL STRIPPING

- A. Remove sod and grass before stripping topsoil.
- B. Strip topsoil to whatever depths are encountered in a manner to prevent intermingling with underlying subsoil or other waste materials.
- C. Stockpile topsoil materials away from edge of excavations without intermixing with subsoil. Grade and shape stockpiles to drain surface water. Cover to prevent windblown dust and

provide temporary Soil Erosion Control measures to prevent migration of soil away from stockpile.

3.8 DISPOSAL

- A. Disposal: Remove surplus soil material, unsuitable topsoil, obstructions, demolished materials, and waste materials including trash and debris, and legally dispose of them off Owner's property.
 - 1. Separate recyclable materials produced during site clearing from other non-recyclable materials. Store or stockpile without intermixing with other materials and transport them to recycling facilities.

END OF SECTION 02230



Quote Date
3/3/2025

PO Number
QTE211046 UNION #5

Quoted By
Paul Flammersfeld

Quote Number
QTE237773

Bill To:

GOURDIE FRASER
123 W FRONT
TRAVERSE CITY, MI 49684

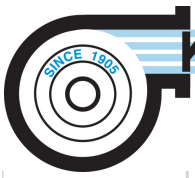
Ship To:

GOURDIE FRASER
123 W FRONT
TRAVERSE CITY, MI 49684

PO Number	Ship Method	Salesperson	Exp Ship	Pay Terms	Customer No.	
QTE211046 UNION #5	R&L - PPD/ADD	31		Progress Payments	GOURD001	
Item	Description	Quantity	B/O	U of M	Unit Price	Extended Price
	UNION STATION # 5					
52809-006-7	HYDROMATIC 4" PUMP MODEL S4KXP2000FC W/20 HP, 3/460V, EXPLOSION=PROOFMOTOR	2	0	EA	\$0.00	\$0.00
51835-046-7	HYDROMATIC M-T-M COMPLETE PACKAGE-4" X 6" - INCLUDES DISCH EL, ACCES, BRKT, SEALING FLG ASSY. INCLUDES: QTTY 2 PER PUMP OF 2" 20FT LONG SS RAILS	2	0	EA	\$0.00	\$0.00
CUSTOM CONT PANEL	CONTROL PANEL FOR DUPLEX PUMPS LISTED ABOVE INCLUDES: Scope of Supply: - NEMA 4 2 Door Enclosure - Enclosure Service Entrance rated Circuit Breaker - Enclosure Cooling Fans with Rain Hoods - Enclosure T-Stat - Internal Enclosure Light - Enclosure Condensate Heater - 2KVA General Purpose Transformer - Lightning Surge Arrestor - Power Monitor Relay - Convenience Receptacle - Alarm Light - Alarm Horn with Silence PB - Power Distribution Block - Pump Motor Circuit Breakers - Pump Motor VFD's 20HP at 460V - Pump Motor Bypass and Isolation Contactors with Thermal Overload protection - Pump H-O-A switches - Pump Bypass-Off-VFD Switches - Pump On Delay Timers - Pump Auxiliary contacts - UPS Battery Backup for 120V Circuits - Deragger Pro 10" Color Touch Screen Controller - Deragger Plus Protection module - Deragger Remote I/O units - Ethernet Switch	1	0	EA	\$0.00	\$0.00

KERR PUMP AND SUPPLY 12880 Cloverdale Oak Park, MI 48237

TEL: 248-543-3880 FAX: 248-543-3236



KERR PUMP AND SUPPLY

	<ul style="list-style-type: none"> - (1) High Level Float Switch, N.O. with 60' cord (Bypasses level sensor and turns on pumps) - Intrinsically safe Barrier for Level sensor - Intrinsically safe relay for float switch - Pump Seal Fail Relay - Pump Motor Thermal Overload relays - Terminals for field wire connections - SCADA Dry contacts included for monitoring are: <ul style="list-style-type: none"> o Pumps Running o Pumps Fault (VFD, Thermal Overload, Motor Thermal and Seal Fail) o Power Failure o Generator Running o High Level Back Up On - (1) E&H Mag Flow Meter with Remote Transmitter - (1) E&H Water Pilot Level Sensor with 60ft cord - (1) 200 Amp Double Throw Manual Transfer Switch, fused, NEMA 3R mounted on main enclosure - (3) MTS Fuses - (1) 200 Amp Reverse Feed Generator Receptacle mounted on main enclosure - (1) Day of Startup Assistance - UL 508A Listed Control Panel <p>Delivery: 6-8 Weeks upon Approval Submittals: 2-3 Weeks ARO Freight: Included in price (freight to Union TWP DPW) Warranty: 1 Year Parts only Terms: Net 30 days from delivery</p>					
CONTROLS	INSTRUMENTATION FLOATS & TRANSDUCERS *NOT* INCLUDING REMOVAL/INSTALLATION MATERIAL ONLY	1	0	EA	\$0.00	\$0.00

PROGRESS PAYMENTS REQUIRED ON ALL JOBS OVER \$50,000.00

40% WITH ORDER
 40% PRIOR TO SHIPMENT
 20% NET 30 DAYS

SUBMITTALS: 2-4 WEEKS AFTER ORDER
 ESTIMATED SHIPMENT: 12-14 WEEKS AFTER SUBMITTAL APPROVAL
 EXW: FACTORY



PO Number	Ship Method	Salesperson	Exp Ship	Pay Terms	Customer No.	
QTE211046 UNION #5	R&L - PPD/ADD	31		Progress Payments	GOURD001	
Item	Description	Quantity	B/O	U of M	Unit Price	Extended Price

ALL PRICES QUOTED HEREIN ARE FIRM FOR 10 DAYS AND DO NOT INCLUDE TAXES WHICH MAY APPLY AT TIME OF SHIPMENT. ALL PRICING IS QUOTED NET, EXWORKS, FREIGHT COLLECT OR PREPAY AND ADD.

ALL ORDERS ARE SUBJECT TO CREDIT APPROVAL. STANDARD PAYMENT TERMS ARE 100% N30 BASED UPON CREDIT LIMIT. PAYMENT TERMS ON ANY ORDER \$50,000 AND GREATER SHALL BE 40% UPON RECEIPT OF ORDER, 40% PRIOR TO SHIPMENT AND 20% NET 30. PLEASE NOTE THAT A TRANSACTION FEE OF UP TO 4% WILL BE ADDED TO ALL CREDIT CARD PURCHASES.

Subtotal	\$0.00
Trade Disc	\$0.00
Freight	\$0.00
Misc	\$0.00
Tax	\$0.00
Total	\$0.00

All quotations and contracts are subject to Kerr Pump and Supply, Inc. Terms and Conditions of Sale dated 1/1/2018, a copy of which can be found on our website kerrpump.com. Placing an order is acceptance of these terms. Shipment time is an approximation based on current inventory and factory production schedules. Quotation is valid for 10 days from Quote date.